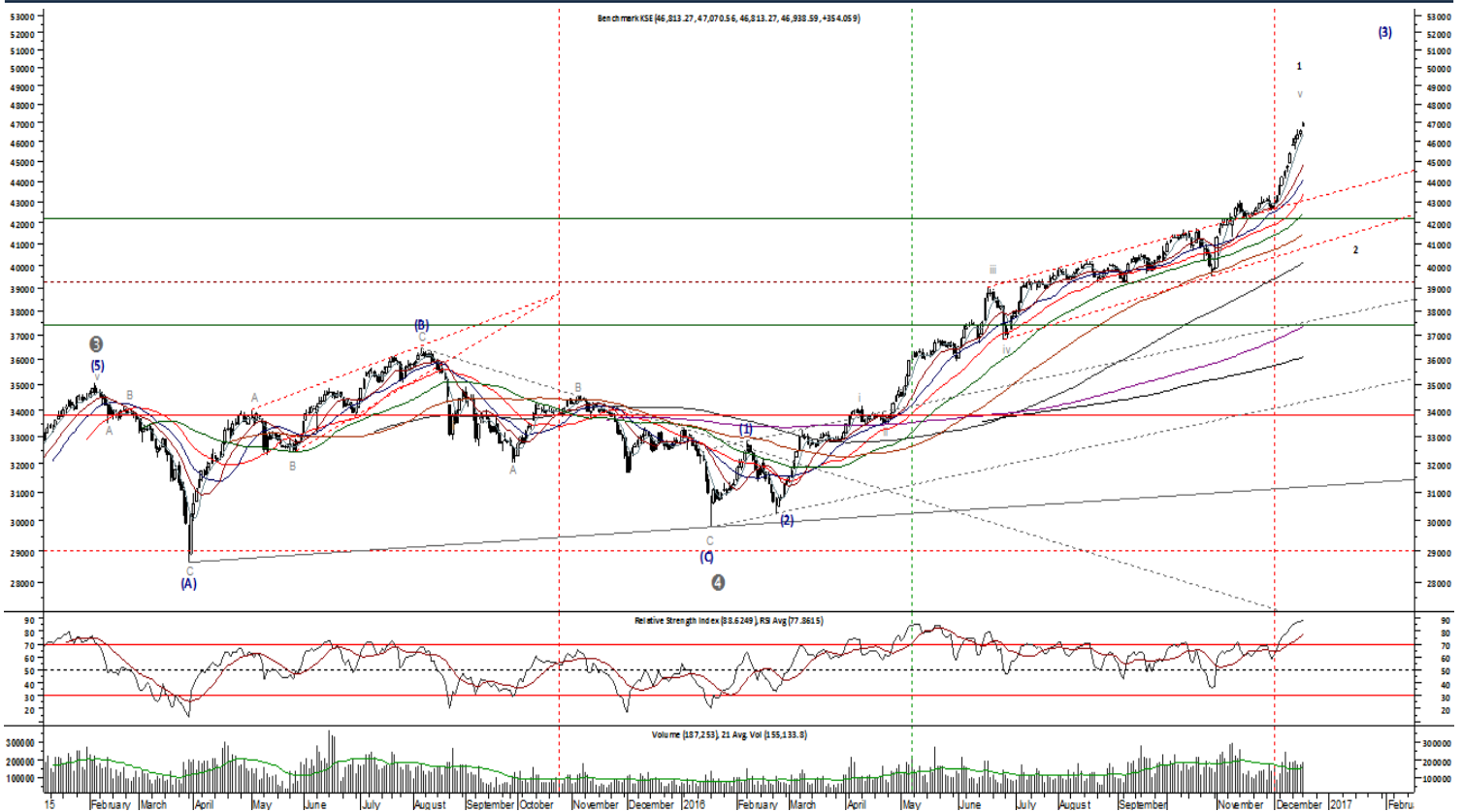




### KSE100 Index

| CLOSE  | HIGH   | LOW    | CHANGE          | 14-day RSI | 55-SMA | 144-SMA | 233-SMA |
|--------|--------|--------|-----------------|------------|--------|---------|---------|
| 46,938 | 47,070 | 46,813 | +354.06 / 0.76% | 88.62      | 42,413 | 40,153  | 37,371  |



### Heating Momentum

After a sharp rise (10.13%) over the last 12 trading sessions, we start giving weight to the heating daily momentum readings as the index approaches our objective of 47,692 level. A closing break below 45,735 level will terminate the bullish sequence and induce short-term correction. Preferred trading plays include PSO, SHEL, ENGRO, PAEL, NBP, MCB, IGIL, AICL & KEL

**13-day Leaders:** MARI, POL, PPL, NATF, ASRL, MEBL, SEARL, PIBTL, FABL & EFUG

**13-day Laggards:** FML, ARM, BOP, IBFL, POML, CPPL, SSGC, SRVI, FFBL & SHFA

#### INTRADAY SUPPORT LEVELS

S1: 46,767

S2: 46,268

S3: 45,735

#### INTRADAY RESISTANCE LEVELS

R1: 47,070

R2: 47,692

R3: —

See page 2 for PSO and HWQS

Qasim Anwar, CMT  
 qasim.anwar@akdsecurities.net  
 111-253-111 (680)

SUPPORT LEVELS

- S1: 406
- S2: 395.88
- S3: 385.75

RESISTANCE LEVELS

- R1: 418.51
- R2: 438.76
- R3: 471.53

SUPPORT LEVELS

- S1: 13.76
- S2: 12.91
- S3: 11.17

RESISTANCE LEVELS

- R1: 14.4
- R2: 16.12
- R3: 18.51

PSO



Ready For A Breakout

Completion of minute consolidation structure and gaining daily momentum readings hint the stock is ready to register a breakout above PkR427.5 for a stride towards PkR471.53. Immediate supports clustered between PkR406 and PkR395.88 are seen absorbing any selling pressure. Risk would unfold below 391.

HWQS



In The Groove

Inline with the breakout (*Rounding Bottom*) highlighted in our report released on 24 Oct, the stock has risen more than 62% to attain our first objective of PkR13.76. The trend still remains bullish which we feel can stretch up to PkR18.51 to complete the 23.6% Fibonacci retracement of 2008 to 2016 descend (PkR64.5 to PkR4.31). Trailing risk is defined below PkR11.17 (3 -day close).

| Scrip   | Close  | % Chg  | 21-day Avg. Volume | 14-day RSI | 21-MA  | 34-MA  | 55-MA  | 144-MA | 233-MA | 52-Week High | 52-Week Low | 55-Day High | 55-Day Low | General Profile | Short-Term Trend | Trading Stance    | Trading Stop | S3     | S2     | S1     | PIVOT  | R1     | R2     | R3     |
|---------|--------|--------|--------------------|------------|--------|--------|--------|--------|--------|--------------|-------------|-------------|------------|-----------------|------------------|-------------------|--------------|--------|--------|--------|--------|--------|--------|--------|
| OGDC    | 165.78 | (0.45) | 4,153,186          | 77.60      | 150.38 | 146.97 | 145.34 | 142.72 | 131.85 | 171.05       | 93.50       | 171.05      | 138.02     | Bullish         | Positive         | Buy               | 155.05       | 157.55 | 161.31 | 163.54 | 167.30 | 169.53 | 173.29 | 175.52 |
| POL     | 559.58 | 2.91   | 741,095            | 84.53      | 469.40 | 446.59 | 433.91 | 394.05 | 342.37 | 570.00       | 188.65      | 570.00      | 390.10     | Bullish         | Positive         | Buy               | 493.00       | 538.14 | 546.59 | 553.09 | 561.54 | 568.04 | 576.49 | 582.99 |
| PPL     | 193.32 | 2.12   | 1,411,381          | 82.95      | 165.77 | 161.57 | 159.92 | 160.32 | 146.82 | 194.87       | 98.42       | 194.87      | 146.23     | Bullish         | Neutral          | Awaiting a Signal | 172.94       | 189.05 | 190.53 | 191.92 | 193.40 | 194.79 | 196.27 | 197.66 |
| PSO     | 412.53 | 0.36   | 852,300            | 64.03      | 400.84 | 401.61 | 406.97 | 400.77 | 379.21 | 427.50       | 295.00      | 427.50      | 385.75     | Bullish         | Positive         | Buy               | 402.30       | 404.72 | 408.11 | 410.32 | 413.71 | 415.92 | 419.31 | 421.52 |
| ATRL    | 409.61 | 5.00   | 1,102,948          | 75.55      | 375.56 | 373.12 | 358.45 | 322.39 | 283.41 | 409.61       | 183.15      | 409.61      | 318.10     | Bullish         | Neutral          | Awaiting a Signal | 388.56       | 382.68 | 388.06 | 398.84 | 404.22 | 415.00 | 420.38 | 431.16 |
| APL     | 709.45 | 1.27   | 50,633             | 71.21      | 663.82 | 647.24 | 611.69 | 524.04 | 489.84 | 730.00       | 398.00      | 730.00      | 516.00     | Bullish         | Positive         | Buy               | 674.51       | 686.25 | 695.62 | 702.54 | 711.91 | 718.83 | 728.20 | 735.12 |
| NRL     | 591.82 | 0.98   | 178,324            | 50.14      | 591.78 | 598.23 | 586.93 | 535.24 | 438.21 | 641.70       | 205.00      | 641.70      | 540.00     | Neutral         | Neutral          | Neutral           | 595.20       | 579.38 | 583.74 | 587.78 | 592.14 | 596.18 | 600.54 | 604.58 |
| MARI    | 1447   | 2      | 86507              | 90         | 1147   | 1100   | 1052   | 987    | 869    | 1475         | 561         | 1475        | 930        | Bullish         | Positive         | Buy               | 1247         | 1383   | 1407   | 1427   | 1451   | 1471   | 1495   | 1515   |
| BYCO    | 23.71  | 1.15   | 7,277,000          | 54.39      | 23.53  | 23.05  | 22.93  | 22.82  | 21.16  | 27.30        | 14.85       | 25.05       | 19.21      | Bullish         | Positive         | Buy               | 23.49        | 23.14  | 23.30  | 23.51  | 23.67  | 23.88  | 24.04  | 24.25  |
| MCB     | 234.58 | (0.60) | 668,343            | 61.78      | 227.09 | 226.03 | 224.15 | 220.93 | 214.55 | 252.25       | 189.01      | 239.40      | 210.00     | Bullish         | Neutral          | Awaiting a Signal | 226.70       | 227.39 | 230.19 | 232.39 | 235.19 | 237.39 | 240.19 | 242.39 |
| NBP     | 73.29  | 0.12   | 2,230,833          | 52.27      | 72.62  | 73.10  | 73.38  | 66.97  | 62.50  | 77.49        | 50.50       | 76.00       | 70.50      | Bearish         | Neutral          | Awaiting a Signal | 72.60        | 71.51  | 72.01  | 72.65  | 73.15  | 73.79  | 74.29  | 74.93  |
| HBL     | 260.11 | 4.32   | 1,077,371          | 77.49      | 236.46 | 238.27 | 232.25 | 216.01 | 201.08 | 261.80       | 162.00      | 261.80      | 217.90     | Bullish         | Neutral          | Awaiting a Signal | 242.16       | 239.34 | 244.17 | 252.14 | 256.97 | 264.94 | 269.77 | 277.74 |
| UBL     | 232.12 | (0.51) | 954,967            | 71.00      | 218.96 | 217.40 | 211.62 | 195.75 | 178.04 | 236.50       | 130.31      | 236.50      | 197.00     | Bullish         | Neutral          | Awaiting a Signal | 222.25       | 224.91 | 228.11 | 230.11 | 233.31 | 235.31 | 238.51 | 240.51 |
| BAFL    | 35.41  | 0.25   | 1,184,310          | 67.49      | 34.03  | 33.50  | 31.96  | 28.98  | 27.86  | 36.11        | 23.70       | 36.11       | 28.35      | Bullish         | Positive         | Buy               | 34.36        | 34.07  | 34.54  | 34.97  | 35.44  | 35.87  | 36.34  | 36.77  |
| AKBL    | 25.27  | 1.24   | 4,035,833          | 73.78      | 24.10  | 24.00  | 22.96  | 20.35  | 20.17  | 25.61        | 17.50       | 25.61       | 19.65      | Bullish         | Neutral          | Awaiting a Signal | 24.50        | 24.12  | 24.48  | 24.88  | 25.24  | 25.64  | 26.00  | 26.40  |
| ABL     | 113.78 | 2.59   | 301,190            | 77.60      | 105.90 | 105.67 | 103.65 | 95.52  | 92.98  | 114.00       | 82.00       | 114.00      | 96.50      | Bullish         | Neutral          | Awaiting a Signal | 108.40       | 107.19 | 108.59 | 111.19 | 112.59 | 115.19 | 116.59 | 119.19 |
| BOP     | 18.28  | 4.76   | 30,098,190         | 52.45      | 18.33  | 18.64  | 17.70  | 12.31  | 10.90  | 20.90        | 7.71        | 20.90       | 12.95      | Neutral         | Neutral          | Neutral           | 18.16        | 17.09  | 17.39  | 17.84  | 18.14  | 18.59  | 18.89  | 19.34  |
| MEBL    | 70.97  | (1.58) | 238,333            | 76.22      | 62.48  | 61.05  | 58.79  | 51.52  | 48.24  | 72.30        | 40.00       | 72.30       | 50.64      | Bullish         | Neutral          | Awaiting a Signal | 64.78        | 68.40  | 69.32  | 70.15  | 71.07  | 71.90  | 72.82  | 73.65  |
| BIPL    | 13.02  | (0.23) | 42,833             | 57.84      | 12.85  | 12.68  | 11.93  | 11.54  | 11.54  | 13.74        | 10.00       | 13.74       | 10.86      | Bullish         | Negative         | Awaiting a Signal | 12.90        | 12.99  | 12.99  | 13.01  | 13.01  | 13.03  | 13.03  | 13.05  |
| FFC     | 104.04 | 0.14   | 1,014,052          | 41.95      | 105.01 | 105.28 | 104.89 | 110.46 | 110.12 | 122.89       | 102.00      | 108.24      | 102.00     | Bullish         | Neutral          | Awaiting a Signal | 105.37       | 102.53 | 103.01 | 103.53 | 104.01 | 104.53 | 105.01 | 105.53 |
| FFBL    | 51.24  | 0.33   | 788,333            | 41.48      | 52.64  | 51.98  | 51.37  | 53.21  | 52.26  | 57.98        | 45.51       | 54.85       | 45.51      | Bullish         | Negative         | Weak Sell         | 52.93        | 50.36  | 50.68  | 50.96  | 51.28  | 51.56  | 51.88  | 52.16  |
| ENGRO   | 311.08 | 0.82   | 1,464,267          | 59.46      | 305.04 | 299.47 | 296.35 | 314.86 | 307.52 | 353.80       | 253.25      | 322.45      | 276.00     | Bullish         | Positive         | Buy               | 304.73       | 304.05 | 306.03 | 308.55 | 310.53 | 313.05 | 315.03 | 317.55 |
| FATIMA  | 34.96  | (0.17) | 837,429            | 51.84      | 34.74  | 34.56  | 34.16  | 33.41  | 33.88  | 45.00        | 29.86       | 36.89       | 30.35      | Bullish         | Positive         | Awaiting a Signal | 35.07        | 33.67  | 34.19  | 34.57  | 35.09  | 35.47  | 35.99  | 36.37  |
| DAWH    | 144.35 | 1.09   | 331,381            | 65.35      | 137.25 | 136.82 | 137.33 | 141.76 | 132.82 | 165.00       | 100.42      | 148.30      | 128.00     | Bullish         | Positive         | Buy               | 138.25       | 140.90 | 141.95 | 143.15 | 144.20 | 145.40 | 146.45 | 147.65 |
| DGKC    | 213.84 | (0.29) | 3,302,762          | 70.20      | 200.49 | 194.04 | 189.49 | 191.60 | 181.62 | 221.48       | 135.95      | 221.48      | 169.80     | Bullish         | Positive         | Buy               | 203.42       | 210.19 | 211.67 | 212.75 | 214.23 | 215.31 | 216.79 | 217.87 |
| LUCK    | 826.73 | (0.86) | 459,998            | 66.40      | 772.69 | 748.90 | 724.23 | 686.26 | 626.14 | 890.00       | 440.11      | 890.00      | 654.00     | Bullish         | Positive         | Buy               | 805.00       | 801.84 | 812.92 | 819.83 | 830.91 | 837.82 | 848.90 | 855.81 |
| ACPL    | 325.00 | -      | 73,400             | 69.59      | 305.61 | 286.41 | 272.41 | 257.89 | 233.55 | 336.00       | 155.00      | 336.00      | 240.00     | Bullish         | Positive         | Buy               | 296.00       | 317.10 | 318.68 | 321.84 | 323.42 | 326.58 | 328.16 | 331.32 |
| FCCL    | 41.66  | 0.60   | 6,319,715          | 66.66      | 40.02  | 39.13  | 37.37  | 37.48  | 38.84  | 45.15        | 32.25       | 42.99       | 33.10      | Bullish         | Neutral          | Awaiting a Signal | 40.60        | 40.97  | 41.29  | 41.47  | 41.79  | 41.97  | 42.29  | 42.47  |
| PIOC    | 139.39 | 0.19   | 1,096,229          | 84.00      | 126.92 | 121.99 | 115.80 | 111.73 | 104.73 | 142.40       | 79.00       | 142.40      | 100.05     | Bullish         | Positive         | Buy               | 129.70       | 135.97 | 137.50 | 138.44 | 139.97 | 140.91 | 142.44 | 143.38 |
| DCL     | 34.95  | (0.03) | 3,933,643          | 51.35      | 35.32  | 34.95  | 33.51  | 23.93  | 19.89  | 38.19        | 10.40       | 38.19       | 25.39      | Bullish         | Negative         | Weak Sell         | 35.34        | 33.70  | 34.25  | 34.60  | 35.15  | 35.50  | 36.05  | 36.40  |
| MLCF    | 122.99 | 1.06   | 2,299,786          | 70.93      | 114.44 | 109.49 | 103.55 | 103.66 | 97.90  | 125.14       | 69.50       | 125.14      | 86.15      | Bullish         | Positive         | Buy               | 116.10       | 119.86 | 120.93 | 121.96 | 123.03 | 124.06 | 125.13 | 126.16 |
| SSGC    | 37.03  | (1.93) | 8,415,786          | 38.02      | 40.10  | 42.26  | 41.11  | 34.89  | 32.80  | 49.34        | 23.97       | 49.34       | 35.00      | Bearish         | Negative         | Sell              | 41.58        | 35.37  | 36.11  | 36.57  | 37.31  | 37.77  | 38.51  | 38.97  |
| SNGP    | 72.53  | (2.15) | 8,451,143          | 61.82      | 68.86  | 68.10  | 63.64  | 50.30  | 41.13  | 75.70        | 18.86       | 75.70       | 48.60      | Bullish         | Negative         | Awaiting a Signal | 68.96        | 68.30  | 70.18  | 71.35  | 73.23  | 74.40  | 76.28  | 77.45  |
| HUBC    | 124.18 | 1.26   | 1,571,767          | 78.94      | 111.22 | 109.71 | 111.41 | 118.29 | 113.25 | 133.90       | 97.25       | 126.75      | 103.02     | Bullish         | Positive         | Buy               | 114.91       | 119.62 | 121.56 | 122.87 | 124.81 | 126.12 | 128.06 | 129.37 |
| KAPCO   | 77.64  | (0.45) | 1,692,810          | 57.65      | 76.21  | 76.44  | 77.12  | 83.03  | 81.49  | 93.00        | 72.31       | 85.00       | 72.31      | Neutral         | Positive         | Neutral           | 76.91        | 75.74  | 76.55  | 77.09  | 77.90  | 78.44  | 79.25  | 79.79  |
| KEL     | 9.48   | 1.83   | 10,620,238         | 61.33      | 9.26   | 9.28   | 9.22   | 8.69   | 8.07   | 9.70         | 6.52        | 9.70        | 8.80       | Bullish         | Positive         | Buy               | 9.36         | 9.11   | 9.19   | 9.34   | 9.42   | 9.57   | 9.65   | 9.80   |
| AICL    | 70.90  | 4.99   | 1,345,881          | 77.22      | 62.19  | 60.82  | 58.83  | 54.59  | 54.69  | 70.90        | 46.70       | 70.90       | 51.60      | Bullish         | Positive         | Buy               | 64.30        | 66.23  | 67.17  | 69.03  | 69.97  | 71.83  | 72.77  | 74.63  |
| NML     | 149.78 | (0.81) | 1,575,686          | 52.40      | 149.47 | 148.71 | 145.35 | 129.51 | 117.39 | 160.00       | 85.11       | 160.00      | 134.00     | Bullish         | Negative         | Weak Sell         | 151.13       | 145.79 | 147.39 | 148.59 | 150.19 | 151.39 | 152.99 | 154.19 |
| JSCL    | 24.23  | 1.64   | 4,299,667          | 57.41      | 23.75  | 23.55  | 23.17  | 21.75  | 21.32  | 25.24        | 15.80       | 25.24       | 19.40      | Bullish         | Negative         | Awaiting a Signal | 24.12        | 23.38  | 23.66  | 23.95  | 24.23  | 24.52  | 24.80  | 25.09  |
| AHCL    | 42.63  | 1.00   | 594,643            | 70.63      | 40.47  | 40.04  | 40.36  | 40.97  | 41.81  | 54.00        | 35.74       | 44.34       | 35.74      | Bullish         | Positive         | Buy               | 41.38        | 40.87  | 41.61  | 42.12  | 42.86  | 43.37  | 44.11  | 44.62  |
| TRG     | 45.50  | 0.80   | 8,839,952          | 61.53      | 43.37  | 43.56  | 43.94  | 39.28  | 35.64  | 47.87        | 22.33       | 47.87       | 38.21      | Bullish         | Neutral          | Awaiting a Signal | 44.05        | 44.08  | 44.60  | 45.05  | 45.57  | 46.02  | 46.54  | 46.99  |
| PTC     | 17.77  | (0.39) | 3,112,595          | 51.29      | 17.74  | 17.80  | 17.78  | 16.71  | 16.04  | 19.34        | 13.32       | 19.34       | 16.25      | Bullish         | Negative         | Weak Sell         | 17.82        | 17.26  | 17.45  | 17.61  | 17.80  | 17.96  | 18.15  | 18.31  |
| TELE    | 5.21   | 0.58   | 5,514,024          | 57.58      | 5.13   | 5.06   | 4.74   | 3.86   | 3.48   | 5.53         | 2.43        | 5.53        | 3.43       | Bullish         | Negative         | Weak Sell         | 5.22         | 4.92   | 5.06   | 5.13   | 5.27   | 5.34   | 5.48   | 5.55   |
| PAEL    | 69.64  | (0.24) | 1,710,381          | 47.43      | 70.16  | 70.36  | 70.25  | 69.27  | 66.21  | 75.35        | 52.61       | 73.55       | 65.10      | Bearish         | Negative         | Awaiting a Signal | 69.11        | 68.18  | 68.81  | 69.23  | 69.86  | 70.28  | 70.91  | 71.33  |
| LOTCHEM | 8.26   | (0.84) | 4,831,310          | 49.55      | 8.38   | 8.20   | 8.20   | 7.14   | 6.61   | 9.49         | 5.00        | 9.49        | 7.02       | Bullish         | Negative         | Weak Sell         | 8.65         | 7.96   | 8.11   | 8.18   | 8.33   | 8.40   | 8.55   | 8.62   |